

Post Installation Steps (to fix sql-server-identity-jumping-1000-identity_cache)

Summary

This article is a step by step guide to perform post installation SQL Server steps

Applies To

This article applies to all SQL Server versions

Issue

There is issue noticed in SQL database with table identities that are jumping values.

10,000 Jump:

2421	2711	879
2422	2712	468
2423	2713	468
2424	12713	614
2425	12714	515
2426	12715	722

2428	12717	878
2429	12718	880
2430	12719	483
2431	12720	290
2432	22720	290
2433	22721	290
2434	22722	290
2435	22723	884

Due to this, in our sample scenario 6585 rows are taking 26879 primary key values:

This is an issue with SQL Server and similar issue is explained on link below:

Post Installation Steps (to fix sql-server-identity-jumping-1000-identity_cache)

https://blog.sqlauthority.com/2018/01/24/sql-server-identity-jumping-1000-identity_cache/

Fix

Please login as SA or Db Admin, select MachPanel_DB (or whatever the DB name) for your installation

Scenario A: SQL Server version 2017 or Later:

Run below command to turn Identity Cache to Off.

ALTER DATABASE SCOPED CONFIGURATION SET IDENTITY_CACHE=OFF;

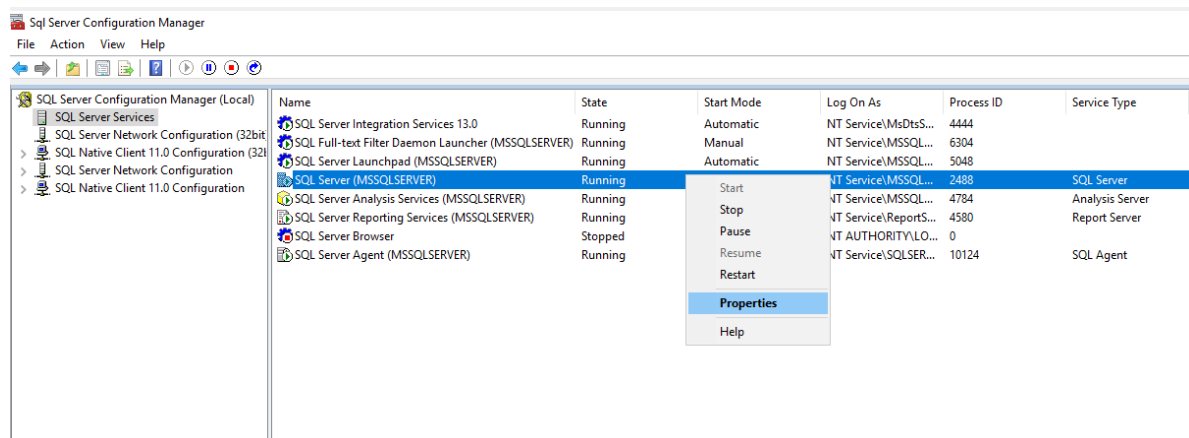
GO

Scenario B: SQL Server versions Earlier than SQL Server 2017:

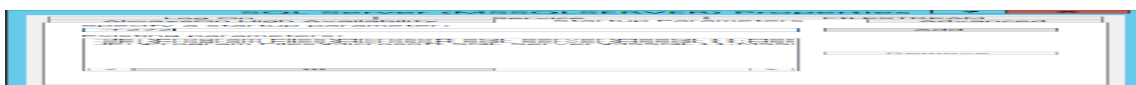
Perform following steps

1. Open up the **SQL Server Configuration Manager**
2. Click the left side of the SQL services in the below image.
3. Right click on the SQL Server instant name at the right pane as shown in the above image. Default value is: SQL Server (MSSQLSERVER),

Click the **Properties** option as shown in the above image.

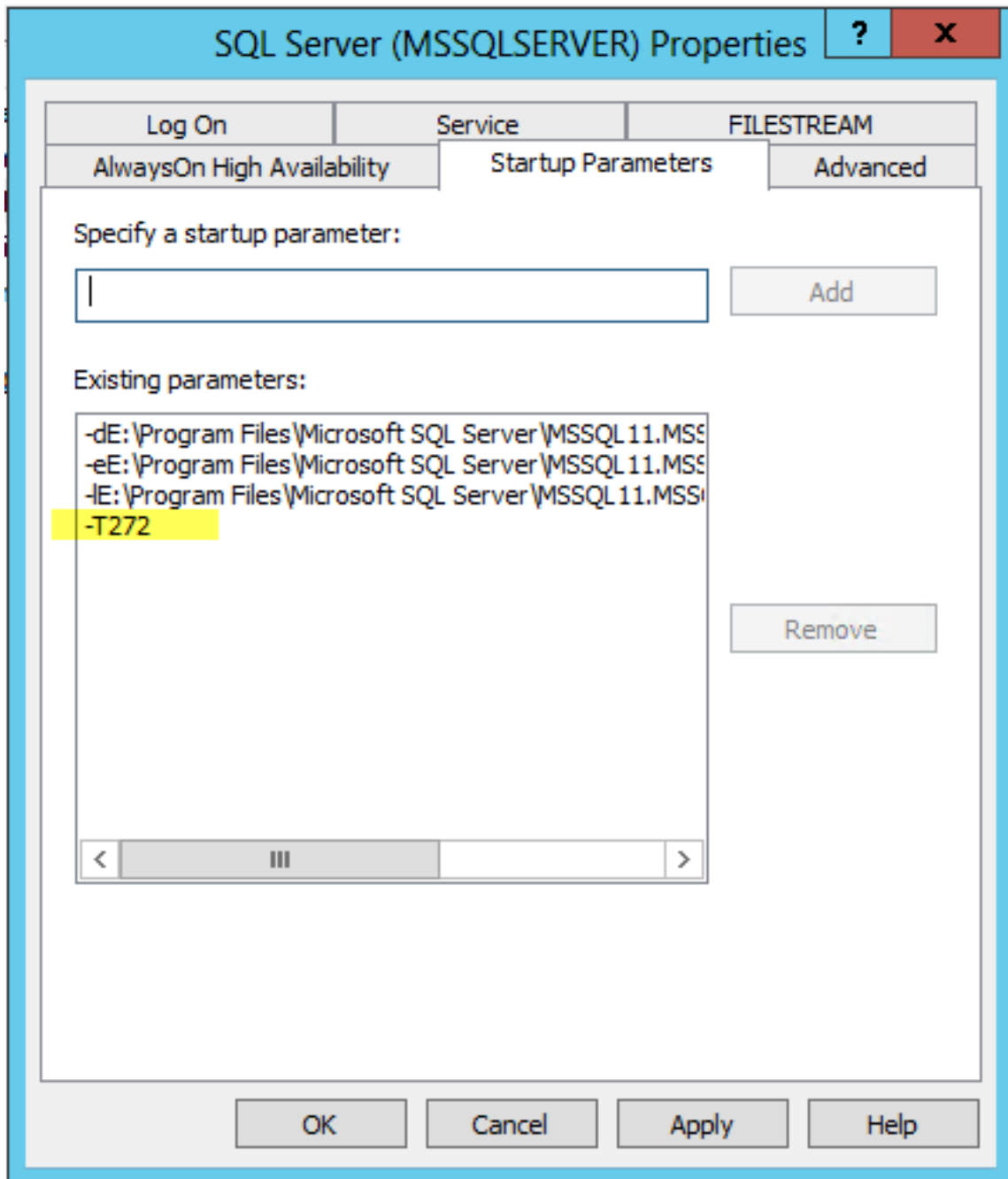


4. Click the **Startup Parameters** tab as shown the below image.
5. Type **-T272** in the **Specify a startup parameter** Textbox field and click **Add**

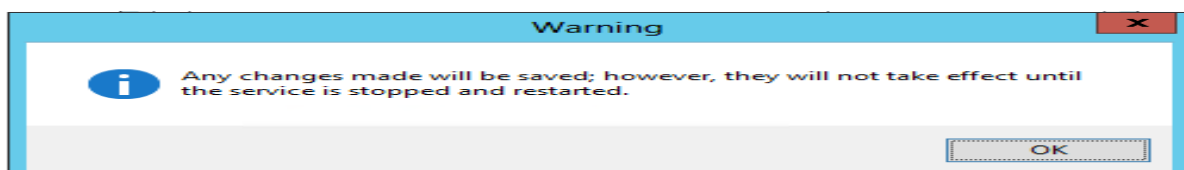


Post Installation Steps (to fix sql-server-identity-jumping-1000-identity_cache)

6. **-T272** parameter will appear in the Existing parameters section as shown in below image.



7. Click the Apply button and you will get the below Warning.
8. Click OK, as Warning message pops up, and Restart the SQL Server instant service.



Post Installation Steps (to fix sql-server-identity-jumping-1000-identity_cache)

MachPanel Knowledgebase

<https://kb.machsol.com/Knowledgebase/55627/Post-Installation-Steps-to-fix-s...>