

Publically v6.0.20 HF1 - Internally v 6.0.23 HF2 - Hotfix for MachPanel build v6.0.20 (Mar 15th, 2018)

Summary

This article provides 6.0.20 HF1 and information about how to apply this fix on your servers.

Applies To

This article applies to MachPanel v6.0.20 HF1.

Important Notes

- Prior to performing any update take backup of your MachPanel Database, and files from Control and Remote servers. See below KB article for more details on how to take backup. <http://kb.machsol.com/Knowledgebase/Article/50248>
- MachPanel Control Panel and all MachPanel Remote Servers need to be on **Build v6.0.20 HF1** and then Hot-fix can be applied. Please follow the steps given below in sequence and execute instructions in the KB articles to complete the update:
 1. [Update to Latest MachPanel](#)
 2. [Update to Latest MachPanel Remote Server](#)

Latest Issues Fixed

Public version displayed as: **v 6.0.20 HF1**

v 6.0.23 HF2

Last Updated on **Mar 15th, 2018.**

1. Fixed the Problem in online (google material icons) font icon rendering and slow performance when there is no (or slow) internet connection.
2. Fixed the problem of IP lockdown in system user getting applied on end customers too whereas it should be applicable to only employee logins.
3. Fixed Error (Cannot insert the value Null into column 'BillingOn') in new reseller creation is fixed.
4. Mobile and EmployeeId fields made mandatory under custom development. To show the

Publically v6.0.20 HF1 - Internally v 6.0.23 HF2 - Hotfix for MachPanel build v6.0.20 (Mar 15th, 2018)

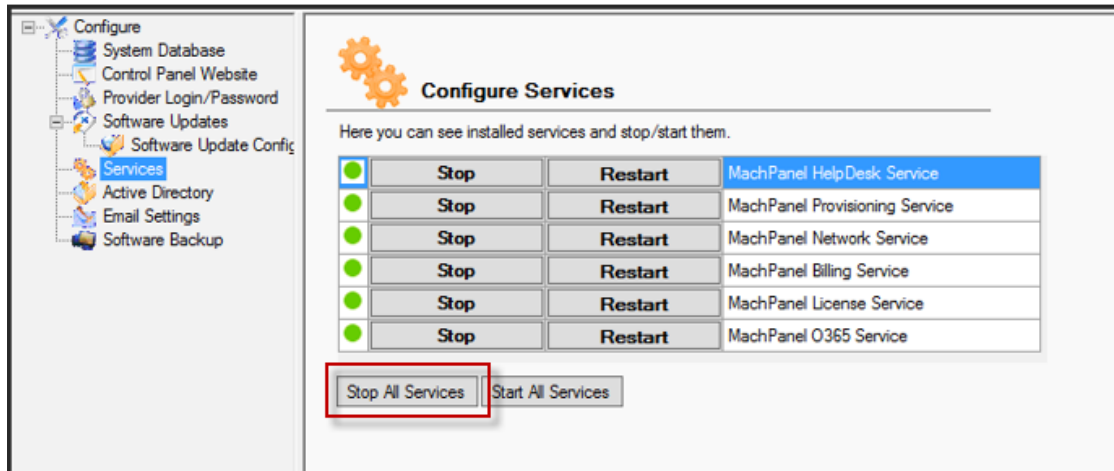
custom required fields (Mobile, EmployeeId) for user mailbox in machpanel, add a registry string value as 'NICMbxCustomFields' under MachPanel key and set its value to '1'. Registry path: HKEY_LOCAL_MACHINE > SOFTWARE > MachSol > MachPanel

5. Fixed DataBase DeadLocked error in Move Subscriptions function.
6. Fixed error in InvoiceDetail display for CSP Subscriptions.
7. Fixed error in Exchange module commands processing when Preferred Domain Controllers are specified and command paramters contain "|" in one or more parameters.
8. Fixed error in setting Full Access permissions in Exchange module.
9. Enhancement: Openssl_encrypt function support added for WHMCS.
10. Enhancement: SPLA by customer report updated, Disable users are removed from count.
11. Enhancement: Public Folder and Archive quota are set to 0 if not allowed in Addon.
12. Enhancement: Checks for PF and Archive quota will be applied if PF allowed and Archive Mailboxes > 1.
13. Enhancement: Option added in personalization setting to set default value for send email checkbox.
14. New Feature: MimeCast support added.
<http://kb.machsol.com/Knowledgebase/Article/55565>
15. Enhancement: Avoid duplicate jobs creation for ADSync users when there is already a pending/failed job present in the queue.
16. Fixed error in Exchange usage report function after PDC update.
17. Fixed error in creating customer from online store.
18. Fixed cannot modify Queue settings in SFB module.
19. Fixed Authorize.Net CIM payments processing issue.
20. Fixed SFBModule audit logs are not visible under SFB.
21. Fixed path error in saving audio files in SFB module work flow functionality.
22. Fixed cannot enable SFB service for a user whose SFB service was disabled.
23. Responsive group ordering issue resolved.
24. Fixed error in CSP invoice calculations due to round off and 30 days month limit usage.
25. New Feature: Voice Mail Policy setting for SFB user added.
26. New Feature: SFB User clone added.
27. Fixed display of error in DNS Manager when no server/service active/available.
28. Fixed error on Mailbox listing when access template restriction are applied.
29. Fixed HTML Tags instead of appropriate description when CSP order is placed via WHMCS.
30. Fixed error on new Order form save (Object refernce not set to instance of object).

Procedure

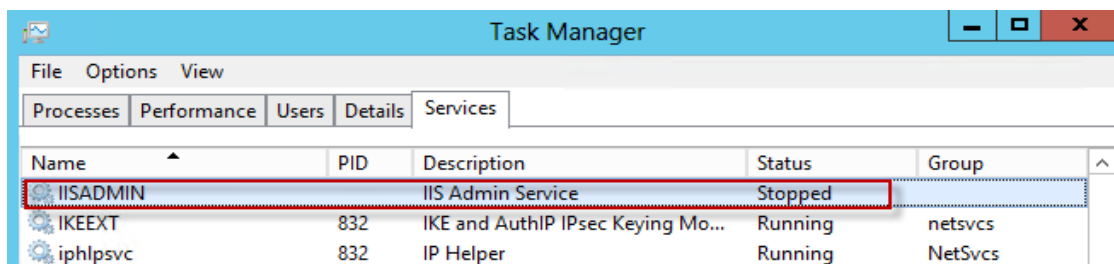
Publically v6.0.20 HF1 - Internally v 6.0.23 HF2 - Hotfix for MachPanel build v6.0.20 (Mar 15th, 2018)

- Go to **MachPanel configuration studio**.
- Shut down all the MachPanel services and also exit the configuration studio. Make sure no instance to MachPanel Configuration Studio is running under any user.



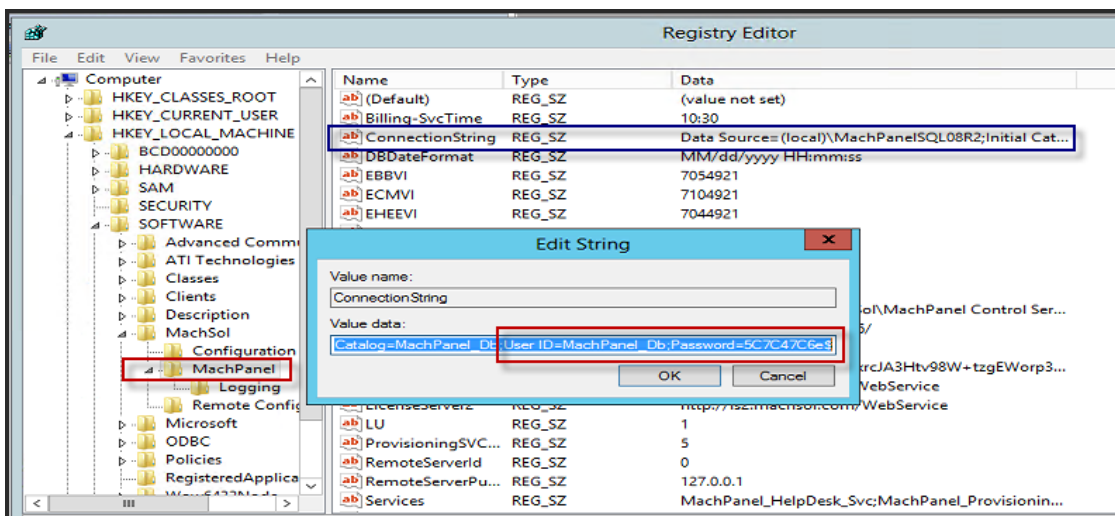
- Download the hotfix **hf2.zip** file from the link at bottom of this page.
- Stop IIS Admin Service, please make sure that all the services are STOPPED from MachPanel Configuration Studio. Verify from "Task Manager" that the following services are not running.

1. MachSol.MachPanel Provisioning Service.
2. MachSol.MachPanel.ConfigurationStudio.exe.
3. MachPanel Billing Service.
4. MachPanel Helpdesk Service.
5. MachPanel Network Service.
6. MachPanel License Service.
7. MachPanel O365 Service.



Publically v6.0.20 HF1 - Internally v 6.0.23 HF2 - Hotfix for MachPanel build v6.0.20 (Mar 15th, 2018)

- Replace files from **MachPanel** folder on MachPanel control server (**Path: C:\Program Files\MachSol\MachPanel Control Server**) and Replace files from **Remote server** folder of hotfix folder on MachPanel remote server (**C:\Program Files\MachSol\MachPanel Remote Server**) keeping the folder hierarchy same as it is in hotfix. (you should get message to **overwrite files**, if not you are not doing it right).
- Execute script.txt from zip file on **MachPanel_Db** after logging in to SQL management studio as MachPanel_Db user. Password can be obtained from connection string in registry of MachPanel Control Server.

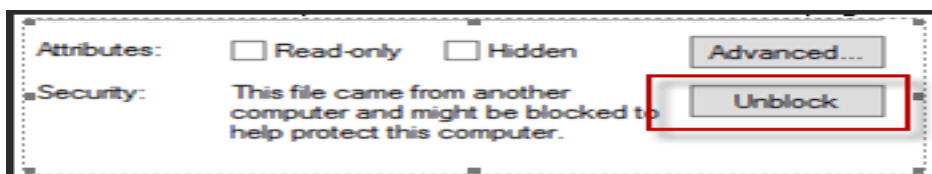


- Once all files are replaced properly from hotfix folder **Restart** all services related to MachPanel on Control as well as Remote Servers.

Download Link

<http://www.machsol.com/updates/6023/hf2.zip>

Note: Please Unblock the files before replacing in installation directory if the downloaded Zip folder is blocked.



Publically v6.0.20 HF1 - Internally v 6.0.23 HF2 - Hotfix for MachPanel build v6.0.20 (Mar 15th, 2018)

MachPanel Knowledgebase

<https://kb.machsol.com/Knowledgebase/55563/Publically-v6020-HF1---Internall...>