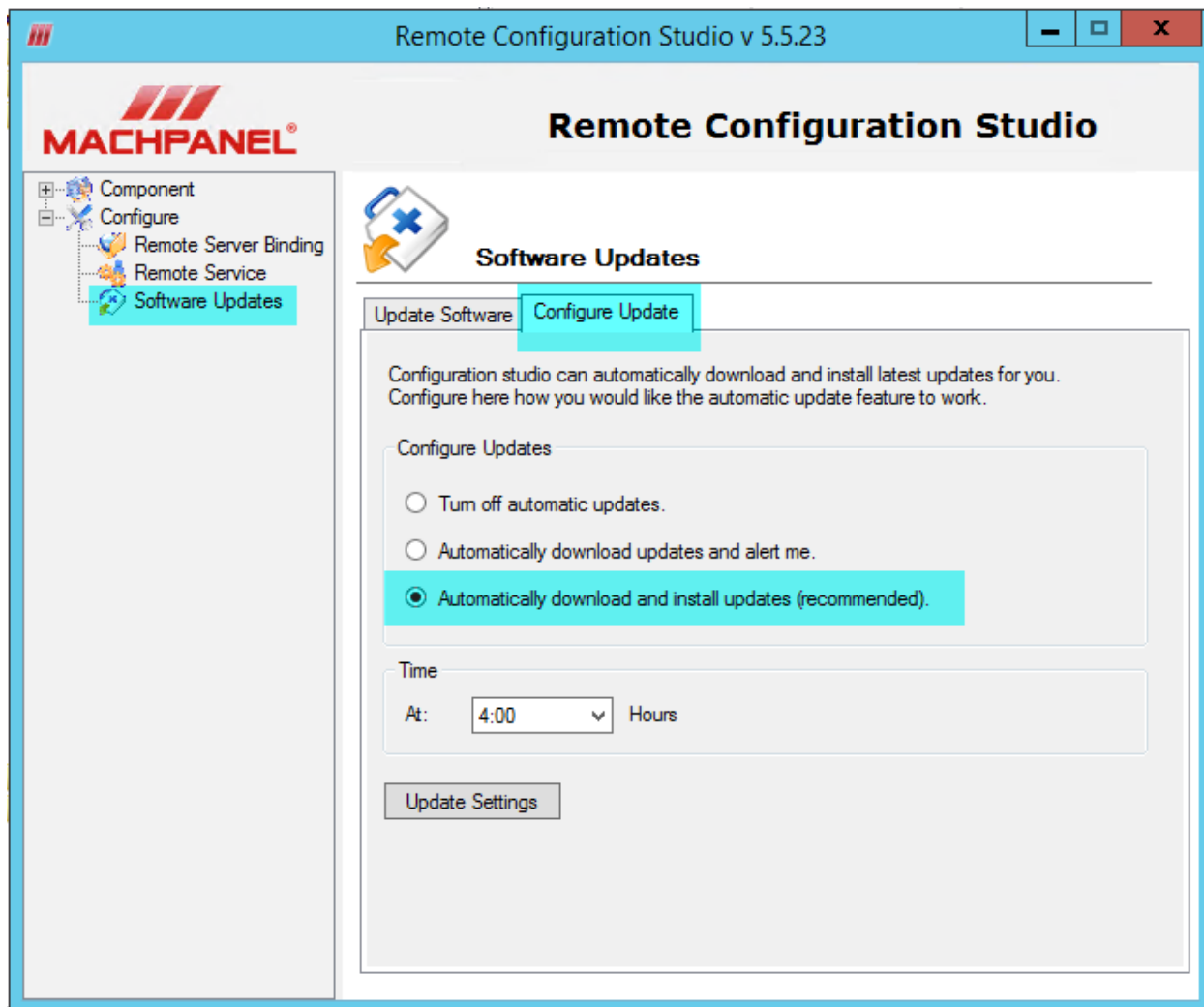


Configure Auto Update for MachPanel Remote Server

Configure Auto Update for MachPanel Remote Server

Please ensure that settings below are set ONCE on all Remote Servers as well as on Control Server for automatic updates to work:

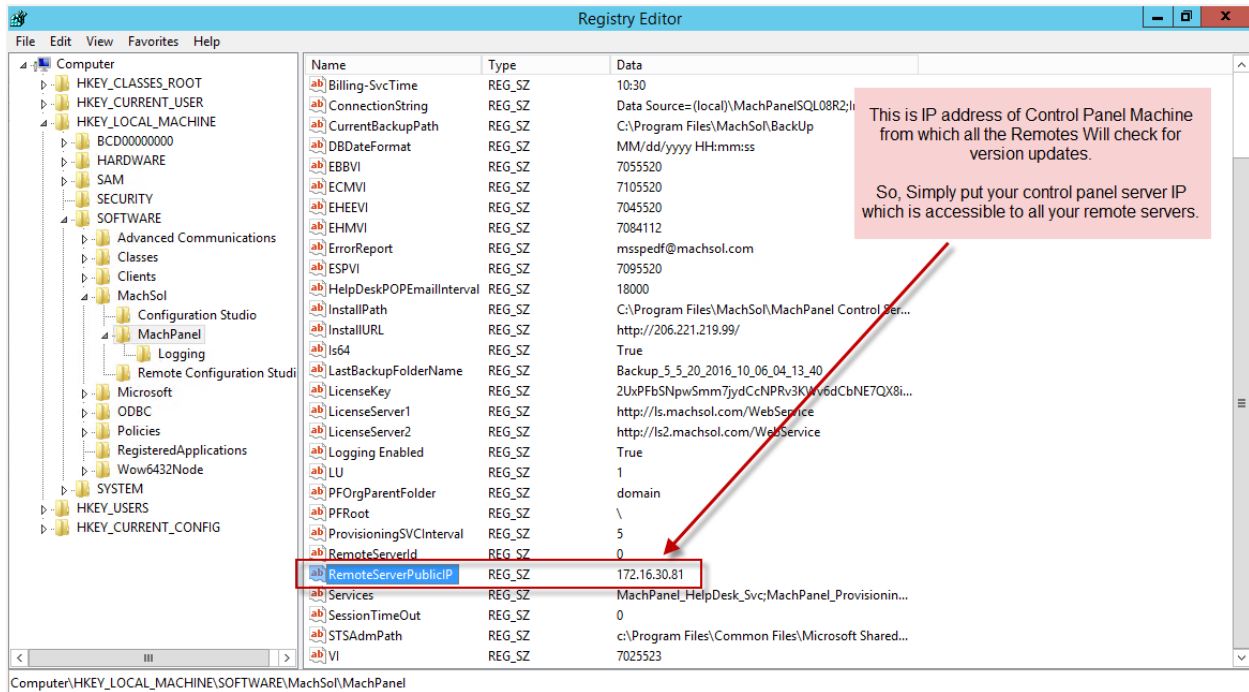
1. Configure MachPanel Remote Server to download and install updates automatically. Change settings as follows and hit **Update Settings** button:



2. Change Registry of Control Panel Server to Set IP of Control Panel machine which is accessible from all remote servers. This IP will be replicated to all remote servers and the remote server will get updates as well as look to be on the same version as control panel

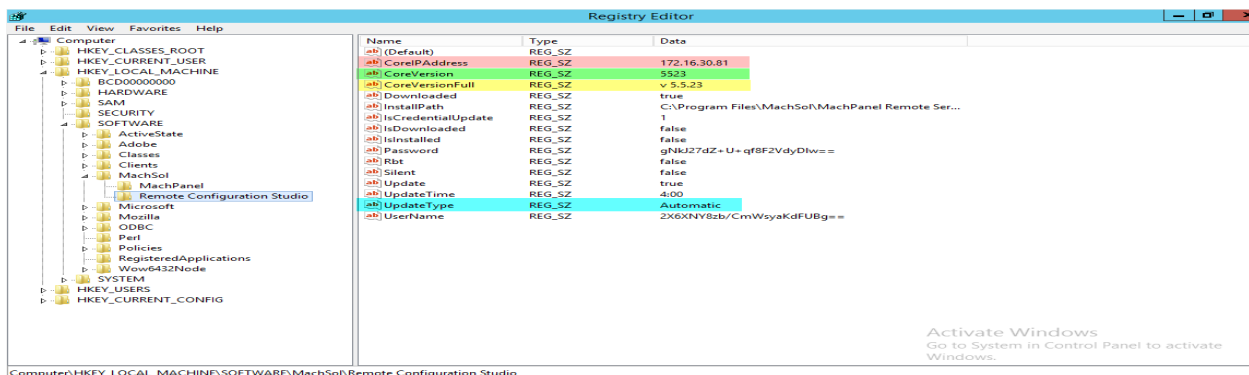
Configure Auto Update for MachPanel Remote Server

with this IP:



3. Change Registry on Remote Server as below:

- **CoreIPAddress:** Will be auto set by control server when you integrate it or you can manually set it same as IP of your control panel server.
- **CoreVersion:** Will be auto updated from control panel machine after service restart on control, but you can manually update it as 5523
- **CoreVersionFull:** Will be auto updated from control panel machine after service restart on control, but you can manually update it as v 5.5.23



Configure Auto Update for MachPanel Remote Server

4. Perform update on Control Panel and then on all Remote Servers.

In future based on these settings, MachPanel Remote Server will get updated automatically whenever The Control Server is updated.

After the updates have been performed, make sure that the control and all the remote servers are on same build, otherwise they wont be able to communicate with each other

MachPanel Knowledgebase

<https://kb.machsol.com/Knowledgebase/54528/Configure-Auto-Update-for-MachPa...>