

# SOP for Specifying Exchange Server Group Additional Settings (All versions)

## Summary

This document is used as SOP for specifying Additional Settings in Exchange Server Group while integrating Exchange Server (All Versions). This document helps you in acquiring the values for fields in additional settings from the back-end Exchange Server (all versions) and describes which fields are to be filled in manually.

## Applies To

Applies to MachPanel v5.3.10 & above

## Solution

### Additional Settings Interface:

Search in menu...

Home > Service Director > Exchange Hosting > Exchange Server Groups

Set as Home Page

Server Groups

Search

Operations

Add Server Group

Status	Server Group Name ID	Provider	Options
Enabled	Exchange-ess2019	Microsoft Exchange 2019	

Showing: 1 - 1 of 1

Showing: 1 - 1 of 1

Add Group Member

Disable

Edit

Assign UM Policy

PST Export Settings

Remove

#### Additional Settings

\*Platform access domain: machpanel.com

\*Auto discover URL: Auto.machpanel.com

\*MX Record: mailmachsol.com,10 Comma, separated MX record values

SPF Value:

\*OWA URL: https://EX1-ess2019.ess2019.local/owa

\*Outlook Anywhere URL: Anywhere.machpanel.com

Incoming mail Address (POP/IMAP):

Outgoing Mail (SMTP):

Exchange Proxy Setting:

Save Cancel

## SOP for Specifying Exchange Server Group Additional Settings (All versions)

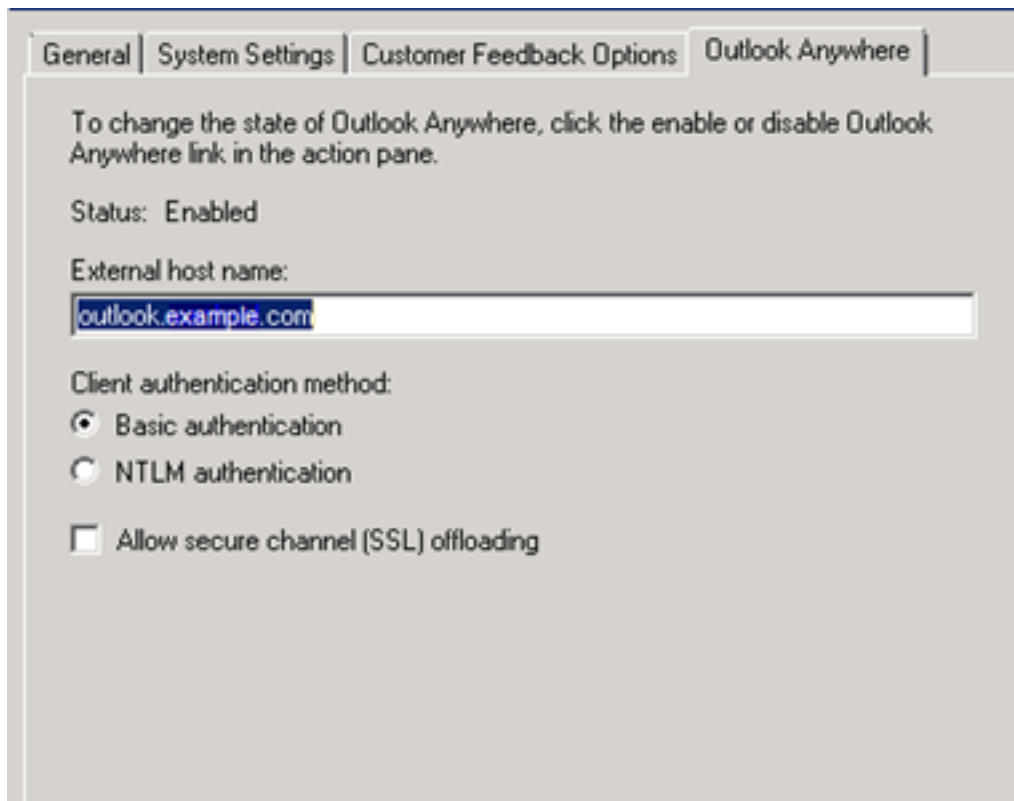
**Note:** The domain name used in this article is example.com

### Platform access domain

The platform access domain can be acquired from the back-end by typing the following command at power shell. See the snapshots below:

```
[PS] C:\Windows\system32>Get-OutlookAnywhere : fl externalhostname  
  
ExternalHostname : outlook.example.com
```

OR



### Auto discover URL

As the domain is example.com so the value for auto discover should be autodiscover.example.com. This value is acquirable from the backend server by using the following command at PS.

## SOP for Specifying Exchange Server Group Additional Settings (All versions)

### ***CMD: Get-autodiscovervirtualdirectory | fl ExternalURL***

#### **Auto discover redirect URL**

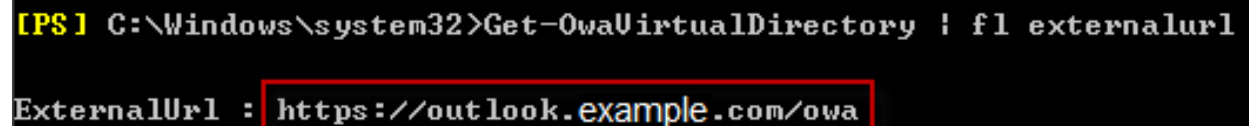
As the domain is example.com so the value for auto discover redirect URL should be autodiscoverredirect.example.com. This value need to be input manually.

#### **MX record address**

MX values in example.com public zone. In our example it will be mx1.example.com, mx2.example.com. These values need to be input manually.

#### **OWA URL**

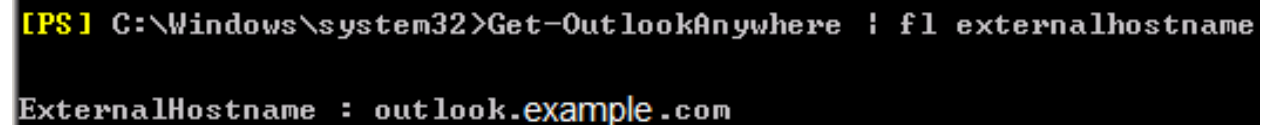
The OWA URL can be acquired from the backend server by typing the following command. See the snapshot below:



```
[PS] C:\Windows\system32>Get-OwaVirtualDirectory | fl externalurl  
ExternalUrl : https://outlook.example.com/owa
```

#### **Outlook Anywhere URL**

The Outlook Anywhere URL can be acquired from the backend server by typing the following command. See the snapshot below:



```
[PS] C:\Windows\system32>Get-OutlookAnywhere | fl externalhostname  
ExternalHostname : outlook.example.com
```

#### **Incoming FQDN (POP/IMAP)**

These values need to be input manually.

1. As domain is example.com so the value for POP should be pop.example.com which should be pointing to CAS.
2. As domain is example.com so the value for IMAP should be imap.example.com which

## SOP for Specifying Exchange Server Group Additional Settings (All versions)

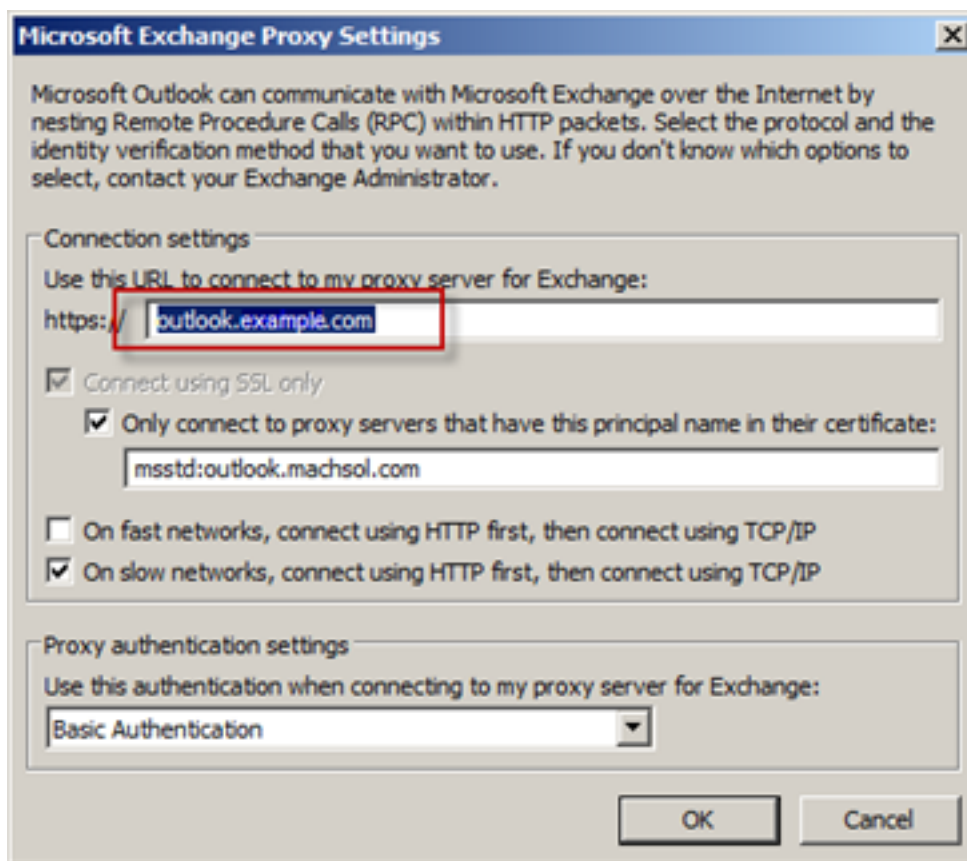
should be pointing to CAS.

### OutgoingFQDN (SMTP)

As domain is example.com so the value for SMTP should be smtp.example.com which should be pointing to HUB Server. This value need to be input manually.

### Exchange Proxy Setting

This value can be acquirable from the backend Exchange Server.



MachPanel Knowledgebase

<https://kb.machsol.com/Knowledgebase/50336/SOP-for-Specifying-Exchange-Serv...>