

MachPanel Configuration Studio Guide



Revision: 1.0
MachSol Corporation, USA.

MACHPANEL®
AUTOMATION IN CONTROL

Table of Contents

ABOUT THIS GUIDE	3
1 MACHPANEL CONFIGURATION STUDIO.....	4
2 MACHPANEL CONFIGURATION STUDIO OPTIONS.....	4
2.1 COMPONENTS	5
2.2 CONFIGURE.....	6
2.2.1 System Database	7
2.2.2 Control Panel Website	8
2.2.3 Provider Login/Password	10
2.2.4 Software Updates	11
2.2.5 Services	13
2.2.6 Active Directory.....	14
2.2.7 Email Settings.....	16
2.3 TROUBLESHOOTING	17



Copyright © 2010 MachSol Inc. Distribution of this content in any form is strictly prohibited and unlawful unless prior written permission is obtained from the copyright holder. All rights reserved.



About this Guide

This guide is an illustration showing how to use MachPanel Configuration Studio utility. It will help you carry out initial setup and essential configuration settings as required. Please carefully follow this guide to understand the benefits and usage of Configuration Studio.

Note: Please use "Download" section (<http://www.machsol.com/Customer/CustomDownloads.aspx>) in **Customer Portal** to access related guides.



Copyright © 2010 MachSol Inc. Distribution of this content in any form is strictly prohibited and unlawful unless prior written permission is obtained from the copyright holder. All rights reserved.



1 MachPanel Configuration Studio

MachPanel Configuration Studio is the latest utility that is an add-on with MachPanel Control Server, specifically designed to perform necessary configuration settings for MachPanel Control Server. It is equipped with easy and simple to use interfaces allowing much more improved customer experience. This powerful utility installed with the MachPanel Control Server comes with all the functionality for initial and essential configuration settings including System Database, Control Panel Website, Provider Login/Password, Software Updates, Services, Active Directory and Email Settings.



2 MachPanel Configuration Studio Interface

MachPanel Configuration Studio is a powerful tool that is divided into two main categories:

1. Components
2. Configuration

Copyright © 2010 MachSol Inc. Distribution of this content in any form is strictly prohibited and unlawful unless prior written permission is obtained from the copyright holder. All rights reserved.



2.1 Components

This is the dynamic area that lists the main components of MachPanel and its extensions that are currently installed on MachPanel Control Server. This category displays the summary of related information about MachPanel Control Server and installed Extensions. Information comprises of:

- Software version
- License Id
- Registration information and
- Licensing details like maximum available clients, mailboxes, accounts, portals along with currently in use and expiry period.



Copyright © 2010 MachSol Inc. Distribution of this content in any form is strictly prohibited and unlawful unless prior written permission is obtained from the copyright holder. All rights reserved.

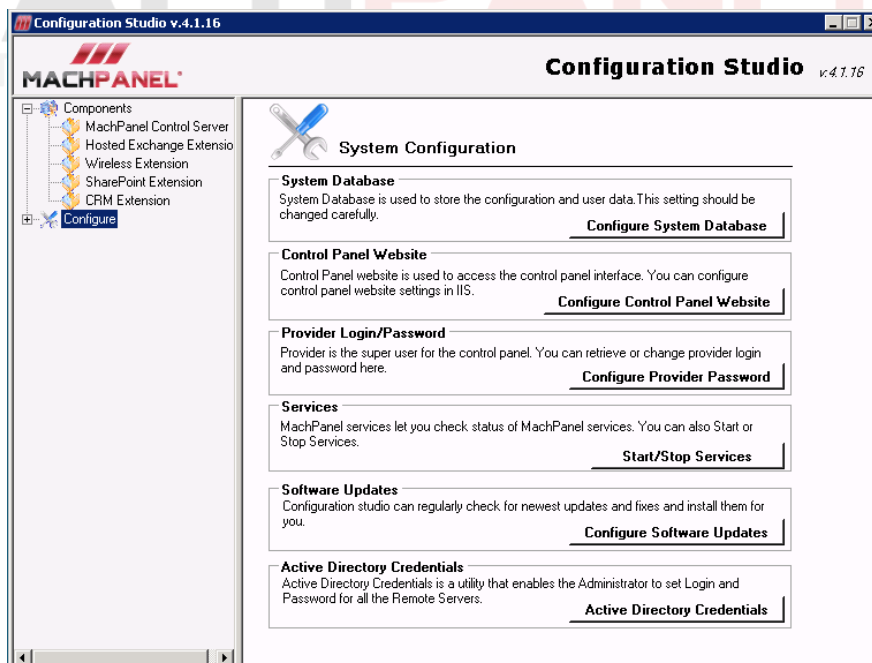


Update License: Click this button to update your license. It is useful especially if you have a leased license or if you have upgraded the license.

2.2 Configure

Second category of **Configure** can be used to setup and configure essential system settings for MachPanel. It comprises of following sections:

- System Database
- Control Panel Website
- Provider Login/Password
- Software Updates
- Services
- Active Directory
- Email Settings
- Details regarding each section are elaborated below.

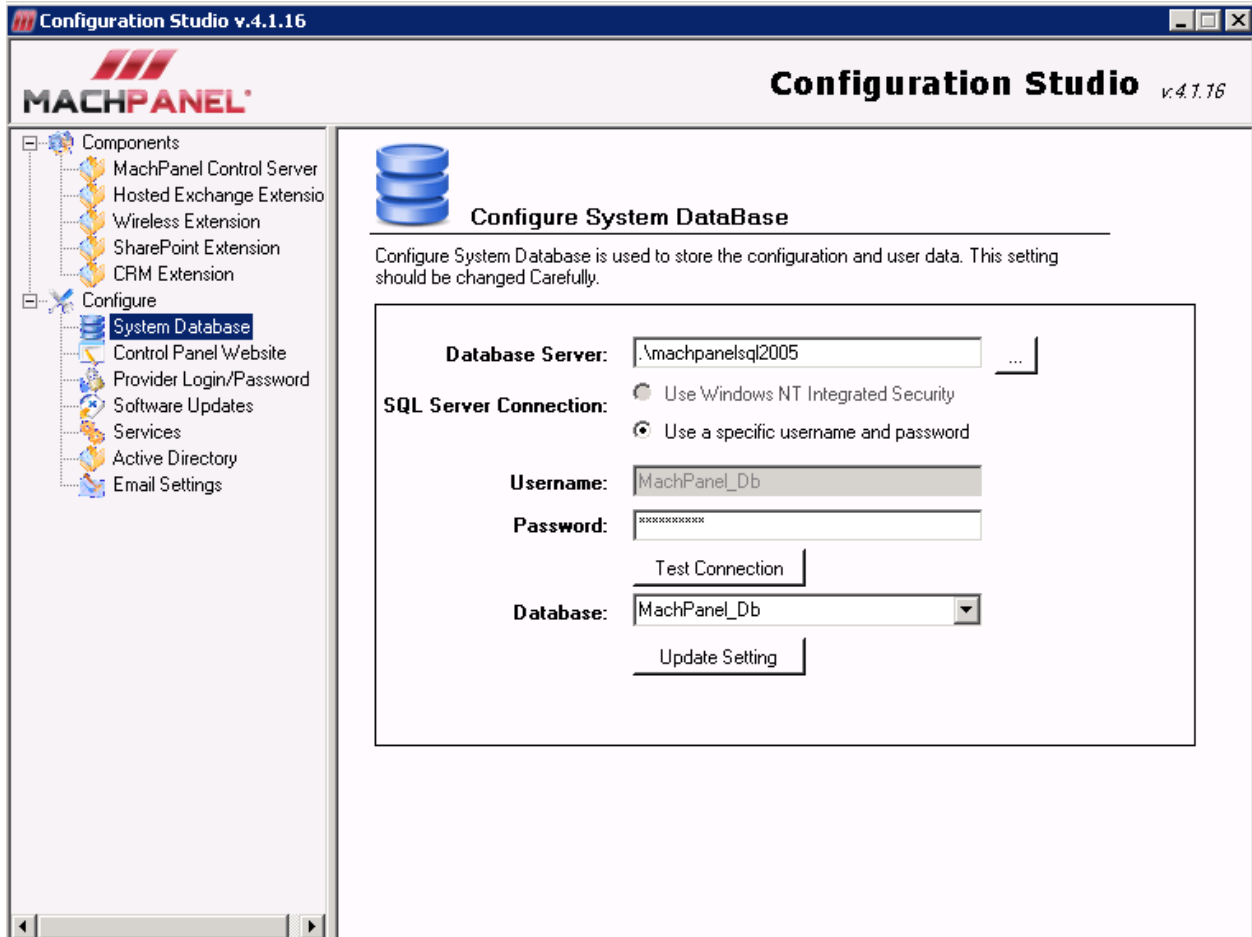


Copyright © 2010 MachSol Inc. Distribution of this content in any form is strictly prohibited and unlawful unless prior written permission is obtained from the copyright holder. All rights reserved.



2.2.1 System Database

This section is used to manage the MachPanel database and its user. In case you want to use an existing database or connect to a new one, you can use this section to configure the necessary connection settings.



A description of the options on this section is as follows:

Database Server: The name of the database server and SQL instance (if applicable). If you have installed the MachPanel database on a SQL Server, then the server name is likely to be either local (if the SQL Server is on the same machine) or MACHINE-NAME (if it is on a remote machine). If you are using MSDE on this machine, then it is likely to be **MACHINE-NAME\MachPanel**. Click the ellipses [...] button to search for SQL Server instances connected to this server, and display them in the dropdown box.

Copyright © 2010 MachSol Inc. Distribution of this content in any form is strictly prohibited and unlawful unless prior written permission is obtained from the copyright holder. All rights reserved.



SQL Server Connection: Select your preferred type of authentication here. You can use either Windows NT Integrated Security or SQL based Security (this is the default).

Username: By default, the username for SQL Server is the eJadSPM_Db account (database administrator). Unless you have specifically renamed the account in SQL, then you should leave this username as “eJadSPM_Db”.

Password: Enter the password for the eJadSPM_Db account here.

Database: This is the name of the MachPanel database. By default, it is eJadSPM_DB but if you wish to create a new MachPanel database with a different name then enter it here, click **Update Settings**, and click the Test Connection button to create a new database with that name.

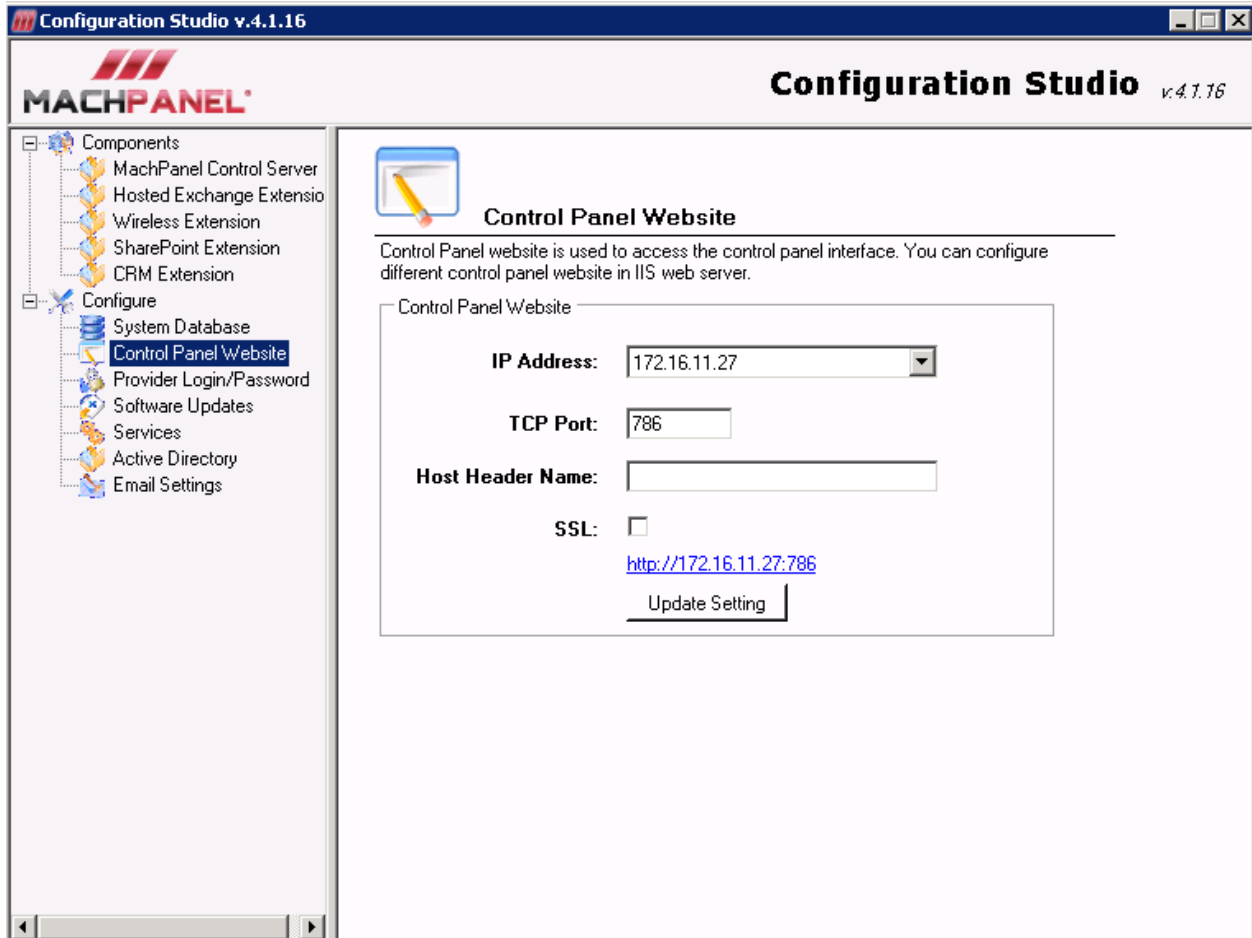
Test Connection: If you want to check that the database can be connected correctly by MachPanel then click this button.

Update Settings: Click this button to apply the changes.

2.2.2 Control Panel Website

This section manages the MachPanel Control Panel website settings used to access the control panel interface. For example, if you wish to configure control panel website as cp.fabrikam.com then you can do it directly from here. Just create the cp.fabrikam.com DNS record and configure it here.





Descriptions of the options of this section are as follows:

IP Address: Choose an IP address that the MachPanel Control Panel website will run on. You can either pick an IP from the dropdown box, or enter one directly into the field.

TCP Port: Choose a port that the MachPanel Control Panel website will run on. By default this is 786 but can be changed to any unused port, or port 80.

Host Header Name: If you want to run the MachPanel website on a specific domain name, then enter it here – e.g. cp.fabrikam.com.

SSL: For using Secure Socket Layer (SSL) protocol, check this option. Doing so will ensure https (Secure Connection)

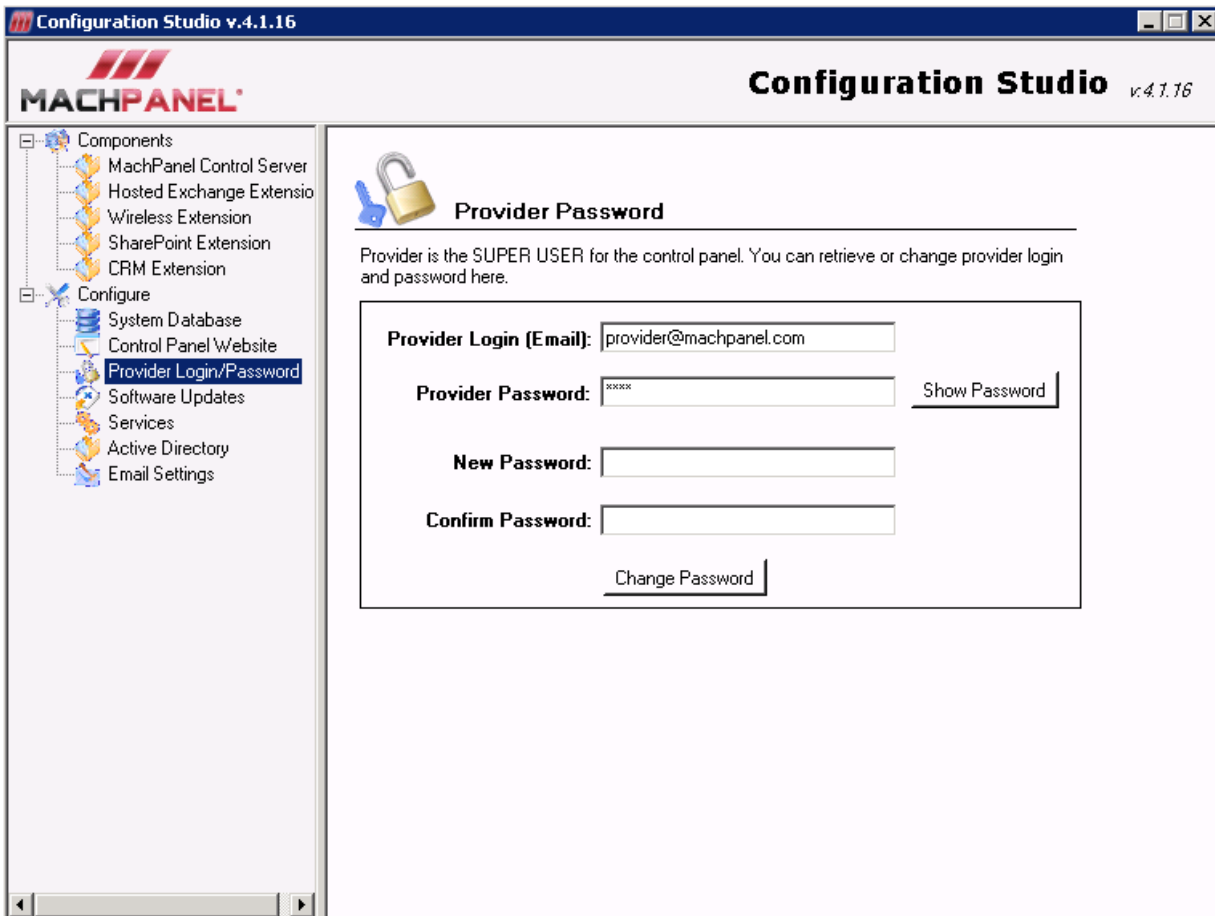
Copyright © 2010 MachSol Inc. Distribution of this content in any form is strictly prohibited and unlawful unless prior written permission is obtained from the copyright holder. All rights reserved.



Update Settings: Click this button for the effect to take place once you want to enter the new settings or modify the existing ones.

2.2.3 Provider Login/Password

In this section you can provide the administrator (**SUPER USER**) Login and Password for the Control Panel. You can also retrieve or change the existing password in case you forget it. **Show Password** button is available to display the current password for SUPER USER.



Provider Login: Contains the login (email) you use to authenticate with the MachPanel Control Server as SUPER USER.

Provider Password: Contains the password you use to authenticate with the MachPanel Control Server.

Show Password: Displays the provider password for the Control Panel.

Copyright © 2010 MachSol Inc. Distribution of this content in any form is strictly prohibited and unlawful unless prior written permission is obtained from the copyright holder. All rights reserved.



New Password: Enter the new password if you want to change the existing password that is used for authentication.

Confirm Password: Re-enter the new password for confirmation.

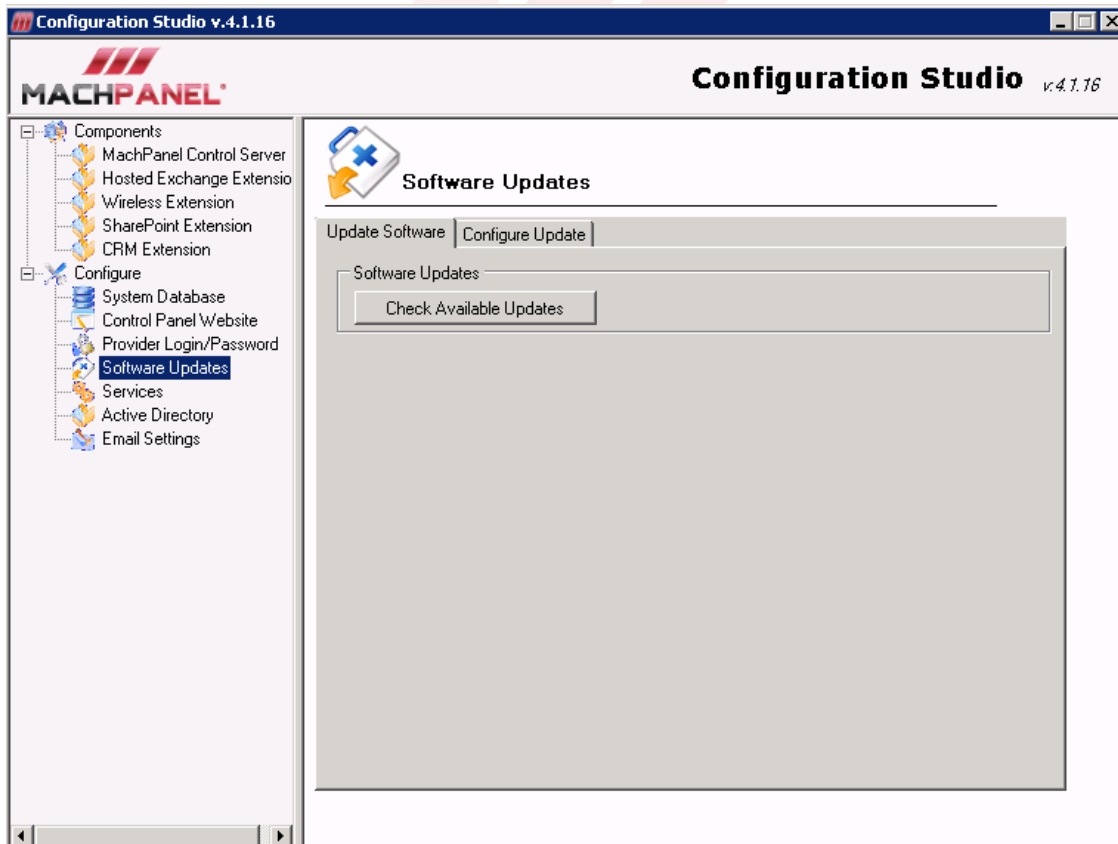
Change Password: Press this button for change password effect to take place.

2.2.4 Software Updates

MachPanel automates the update process once the new version updates are available. On this section you can view the available updates that can be downloaded for MachPanel, choose your automatic update settings and also configure when to check for updates.

Update Software

Choose the Update Software tab and press **Check Available Updates** button to see a list of latest updates that are ready for your MachPanel installation.



Copyright © 2010 MachSol Inc. Distribution of this content in any form is strictly prohibited and unlawful unless prior written permission is obtained from the copyright holder. All rights reserved.

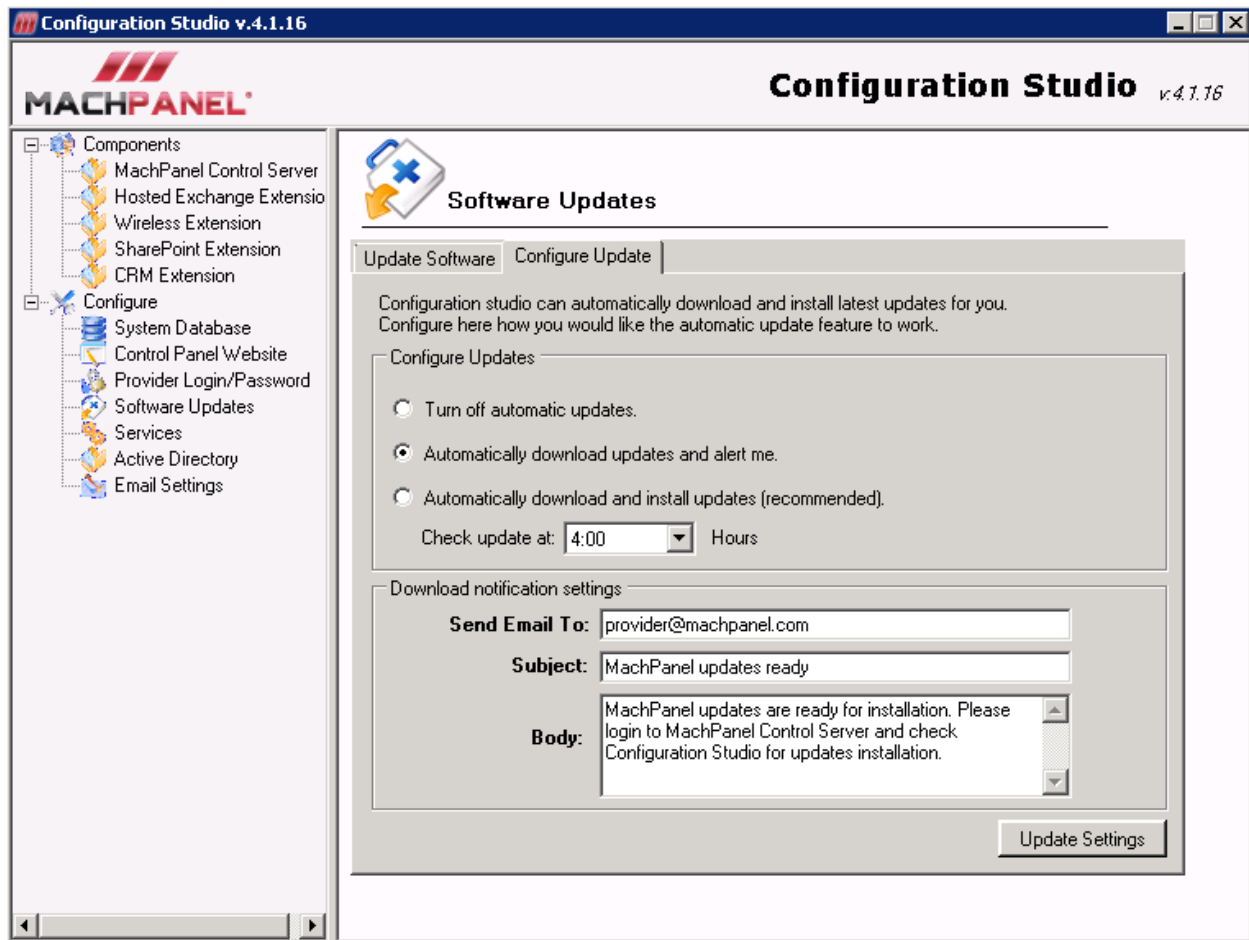


IMPORTANT: It is necessary that internet is active on MachPanel Remote Server for carrying out successful updates. Please see <http://kb.machsol.com/Knowledgebase/Article/50105> for details.

Check Available Updates: Click this button to search for latest updates for MachPanel.

Automatic Update Settings

Choose the **Configure Update** tab to choose your options for installing updates automatically.



Turn off automatic updates: If you want to disable automatic updates option or want to update manually, select this option

Automatically download Updates and alert me: If you want the system to check for MachPanel latest updates, download these updates and alert you once this is done, select this option.

Copyright © 2010 MachSol Inc. Distribution of this content in any form is strictly prohibited and unlawful unless prior written permission is obtained from the copyright holder. All rights reserved.



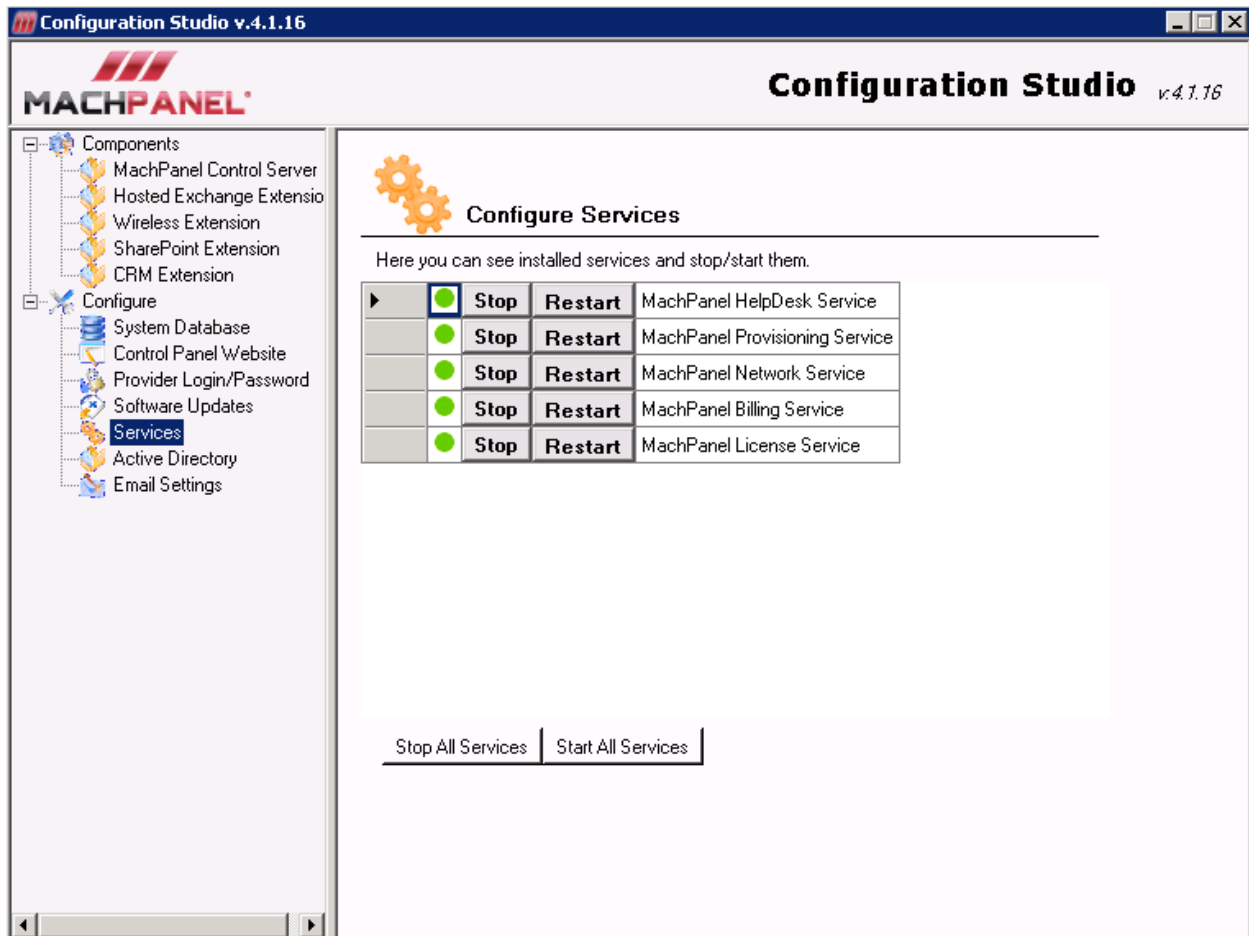
Automatically download and install Updates (recommended): If you want the system to check for MachPanel latest updates, download these updates and install automatically, select this option. This is the most **recommended** option

Time: Update action is to be performed at this specific time

Update Settings: Click this button to apply the changes

2.2.5 Services

This section shows the MachPanel installed services currently running on your server, as well as specifies their details. You can stop, start or restart these services from here.



Configuration Studio v.4.1.16

MACHPANEL Configuration Studio v.4.1.16

Configure Services

Here you can see installed services and stop/start them.

<input checked="" type="checkbox"/>	Stop	Restart	MachPanel HelpDesk Service
<input checked="" type="checkbox"/>	Stop	Restart	MachPanel Provisioning Service
<input checked="" type="checkbox"/>	Stop	Restart	MachPanel Network Service
<input checked="" type="checkbox"/>	Stop	Restart	MachPanel Billing Service
<input checked="" type="checkbox"/>	Stop	Restart	MachPanel License Service

Handful of MachPanel Services can be stopped/started that comprise of:

Copyright © 2010 MachSol Inc. Distribution of this content in any form is strictly prohibited and unlawful unless prior written permission is obtained from the copyright holder. All rights reserved.



1. **MachPanel HelpDesk Service:** Manages Ticketing system and exhibit notifications as configured.
2. **MachPanel Provisioning Service:** MachPanel extends its functionality through **Enterprise Extensions** e.g. (Hosted Exchange Extension, Hosted SharePoint Extension, BlackBerry Extension etc.). Remote servers running Enterprise Software are provisioned using this MachPanel Provisioning Service.
3. **MachPanel Network Service:** This is responsible for network monitoring and management.
4. **MachPanel Billing Service:** Payments/Documents/Invoices and notifications/emails are handled through this MachPanel Billing Service.
5. **MachPanel License Service:** It communicates with the Licensing Server to activate/upgrade the license and is used for License management.

A description of the options on this section is as follows:

Start: If you want to start the MachPanel Services, click this button.

Stop: If you want to stop the MachPanel Services for any reason, click this button. MachPanel will not be able to perform any actions on remote servers until these Services are restarted.

Restart Services: If you want to restart (refresh) the MachPanel Services, click this button.

Start All Services: If you want to start all the MachPanel Services, click this button.

Stop All Services: If you want to stop all the MachPanel Services for any reason, click this button. MachPanel will not be able to perform any actions on remote servers until these Services are restarted.

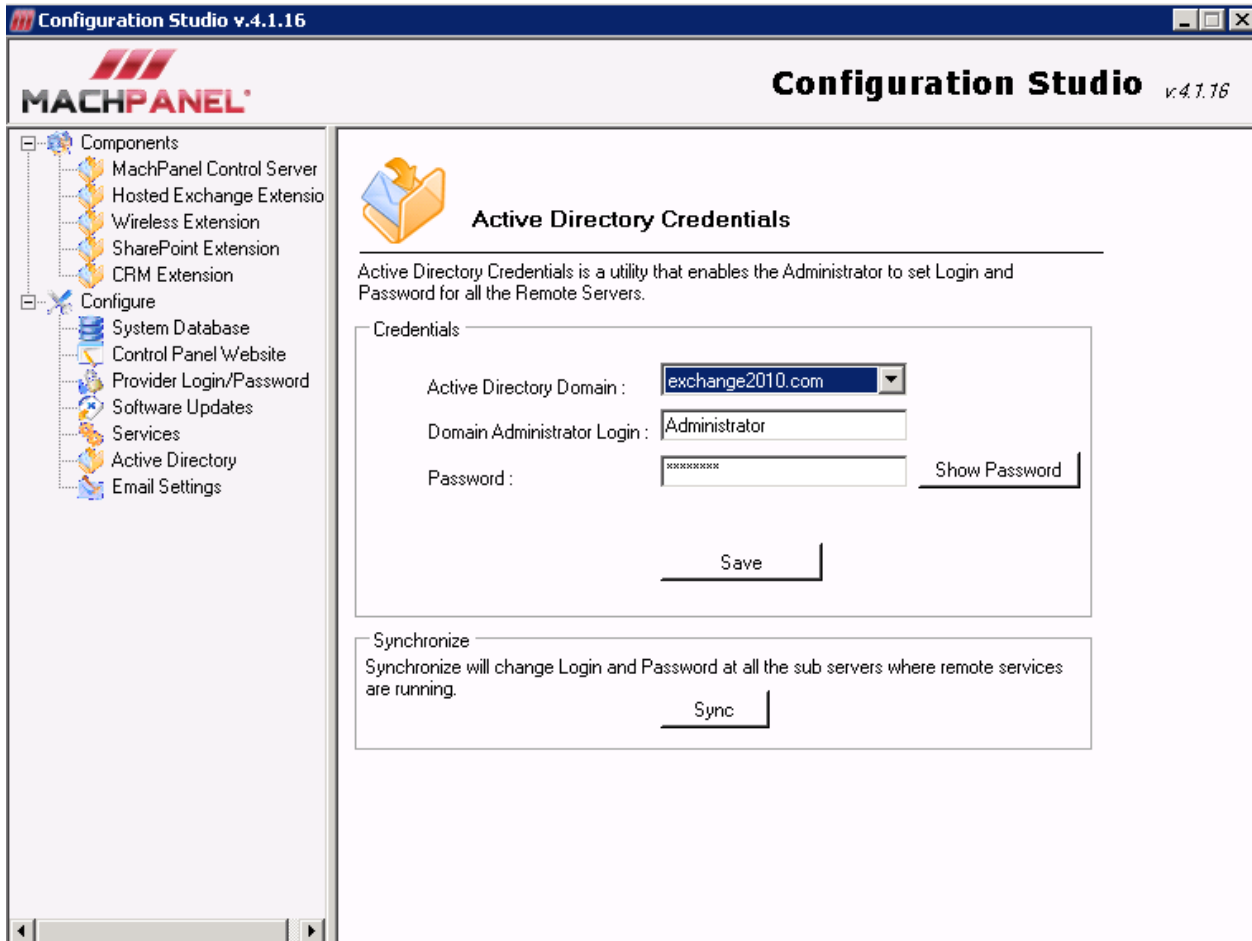
2.2.6 Active Directory

This section enables the administrator to set Login and Password for all the Remote Servers.

Example: If you have a remote server with Exchange Server installation. It needs to be authenticated through Active Directory. MachPanel Provisioning Service will provision the Exchange Service through Remote Server (Active Directory Credentials) using MachPanel Hosted Exchange Extension. Similarly, on another remote server you have SharePoint and so on. This section will allow you to sync the passwords for all Remote Servers.



Note: In case, you forget your password you can simply retrieve it by clicking **Show Password** button and you don't have to change the passwords manually at each remote servers. This will save your effort and allow convenience through automation.



Active Directory Domain: Enter the name of the Active Directory you want to change through this machine.

Domain Administrator Login: Enter the name of domain administrator here.

Password: Enter the password you want to use.

Show Password: Displays the current password

Save: Click this button to save the changes

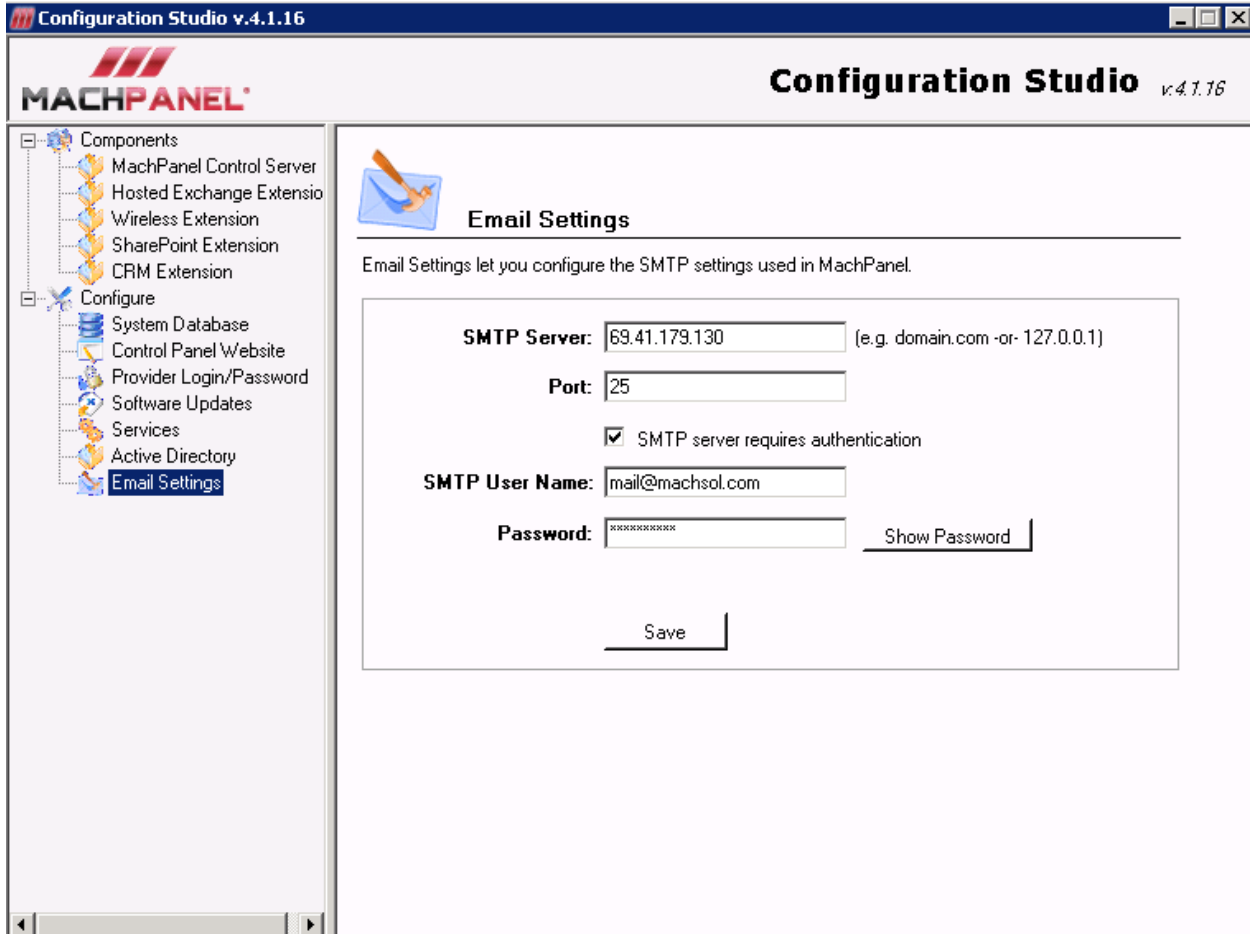
Copyright © 2010 MachSol Inc. Distribution of this content in any form is strictly prohibited and unlawful unless prior written permission is obtained from the copyright holder. All rights reserved.



Sync: The Sync button will Synchronize the active directory user name and password on all MachPanel Remote Server installations.

2.2.7 Email Settings

You must fill in the correct details in this section because all the alerts, invoices/documents e-mails etc will be sent through this SMTP server.



The screenshot shows the Configuration Studio v.4.1.16 interface. On the left is a tree view with 'Components' (MachPanel Control Server, Hosted Exchange Extension, Wireless Extension, SharePoint Extension, CRM Extension) and 'Configure' (System Database, Control Panel Website, Provider Login/Password, Software Updates, Services, Active Directory, and Email Settings). The 'Email Settings' window is open, featuring a blue envelope icon and the title 'Email Settings'. Below the title is a description: 'Email Settings let you configure the SMTP settings used in MachPanel.' The configuration fields are: 'SMTP Server' (69.41.179.130), 'Port' (25), a checked checkbox for 'SMTP server requires authentication', 'SMTP User Name' (mail@machsol.com), and 'Password' (masked with asterisks). A 'Show Password' link is next to the password field, and a 'Save' button is at the bottom.

Descriptions of the available options are as follows:

SMTP Server: Enter an IP address or domain name for the SMTP server that you wish to send mail from. This may be **localhost** if you are sending it locally through a mail server on this machine.

Port: Enter the port that SMTP is communicating out on. By default this is 25.

Copyright © 2010 MachSol Inc. Distribution of this content in any form is strictly prohibited and unlawful unless prior written permission is obtained from the copyright holder. All rights reserved.



SMTP Server Authentication: Check this option for security credentials

SMTP Username: Enter a valid email address in this field.

Password: Enter password in this field.

Show Password: Displays the password.

Save: Click this button to apply changes.

Note: For SMTP Settings to work correctly, enter valid email address.

2.3 Troubleshooting

We maintain handful of useful resources to allow better support and enhance user experience with our product, making the most of it. You can utilize this supplementary information as per requirement. Just follow the below mentioned links for further assistance:

Additional Helpful Resources

1. If you have further questions or want to know more, visit our **Frequently Asked Questions (FAQs)** section at:
<http://kb.machsol.com/Knowledgebase/2>
2. For additional assistance, errors, configuration and troubleshooting issues feel free to consult our regularly updated **Searchable Knowledgebase** at:
<http://kb.machsol.com/>
3. Visit our **Blog** to comment on various categories of postings and learn about new offers, announcements and tips & tricks at:
<http://blog.machsol.com>
4. Post any of your **ideas /suggestions** at our dedicated portal:
<http://ideas.machsol.com/>

